



CHINTELS  
*Serenity*

LUXURY. HARMONY. REDEFINED

SECTOR 109, CHINTELS METROPOLIS, GURUGRAM





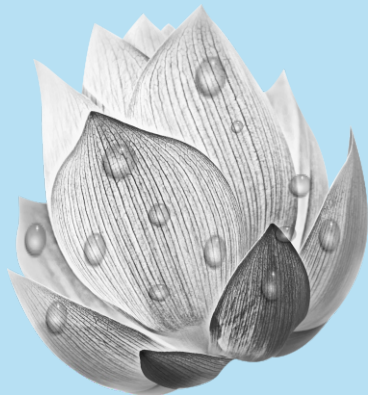


# CHINTELS *Serenity*

LUXURY. HARMONY. REDEFINED

SECTOR 109, CHINTELS METROPOLIS, GURUGRAM

Chintels Serenity is located in the prime and exclusive Chintels Metropolis area which is emerging as the most preferred destination in the Delhi and NCR region, near Dwarka Expressway in close proximity to IGI Airport, Dwarka, South & West Delhi.

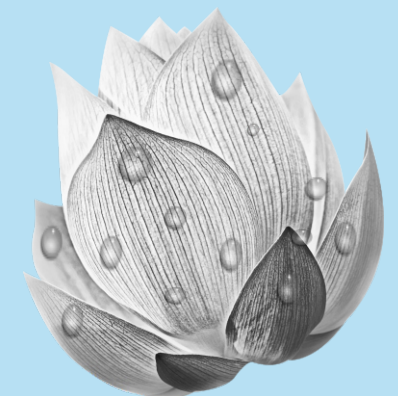






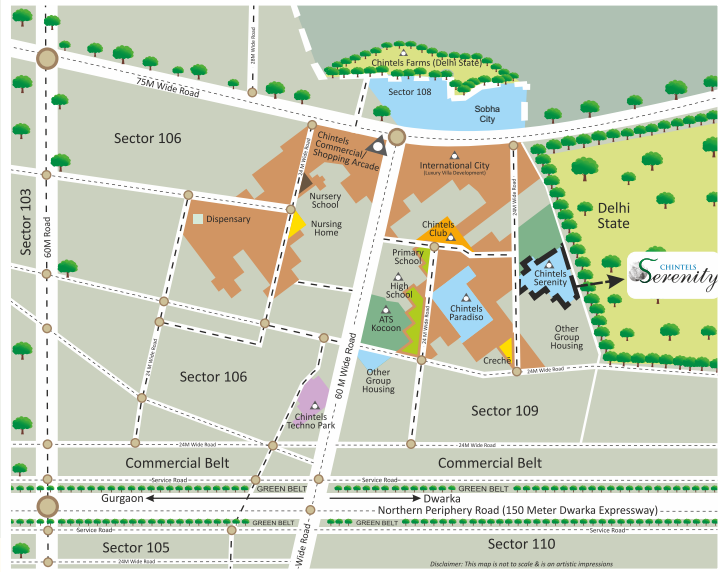
## Alluring Open Spaces

Innovatively designed, Chintels Serenity has uninhibited open spaces throughout the project to create a fulfilling and rewarding life style of comfortable living.





# LOCATION MAP





# SITE PLAN

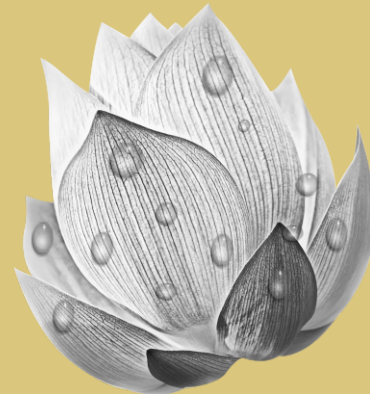
**9.75 ACRES - 444 APARTMENTS**

## LEGENDS

- 1. ENTRY
- 2. EXIT
- 3. GUARD ROOM
- 4. ENTRANCE PLAZA
- 5. RAMP ENTRY
- 6. RAMP EXIT
- 7. POOL OF SERENITY
- 8. GARDEN OF HARMONY
- 9. GARDEN OF REPOSE
- 10. GARDEN OF TRANQUILITY
- 11. SWIMMING POOL
- 12. CLUB LAWN
- 13. KIDS PLAY AREA
- 14. TOWER DROP OFF
- 15. BASKETBALL COURT
- 16. SKATING RINK
- 17. JUDO/TAEKWONDO/YOGA
- 18. TRANQUIL WOODS WITH MEDITATION PAVILIONS
- 19. WOODLANDS
- 20. ENTRY COURT AT BASEMENT LVL
- 21. CONVENIENT SHOPPING
- 22. EWS HOUSING
- 23. NURSERY
- 24. COMMUNITY CENTER
- 25. CRICKET PRACTICE NET
- 26. PETS PARK
- 27. LAWN TENNIS COURT
- 28. BADMINTON COURT



Nine High Rise Towers with Modern Luxurious Club, Swimming Pool, Lush Green Walkways and Gardens.





# LUXURY IN PEACE

## BREEZE TO BRING FRESHNESS THROUGHOUT THE DAY

Large balconies and open spaces between towers ensures cross ventilation throughout your apartment all the time.



## SPECIALLY DESIGNED GARDENS TO BRING HEALTH AND PEACE

Carefully chosen trees and shrubs to attract birds and butterflies to add to the tranquility of beautiful garden.



Perspective view: All images, landscapes, amenities and accessory visuals shown in the brochure are only indicative and subject to change as decided by the company or competent authority. We are offering for sale, unfurnished apartments not including add on such as furnished & fixtures, unless specifically, incorporated in the agreement to sale.



# REJUVENATE BODY & MIND



CLEAN BLUE WATER TO PLEASE YOUR EYES & CALM YOUR MIND

In the hustle - bustle of the modern world, our residents find sanctuary in the Serenity Club - a place to unwind and work out or just to sit back and relax.



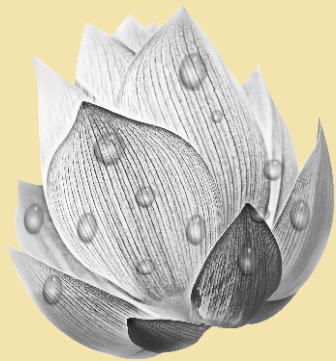


# INTERIOR ELEGANCE



SUNLIGHT TO BRIGHTEN UP EVERY  
MOMENT OF THE DAY

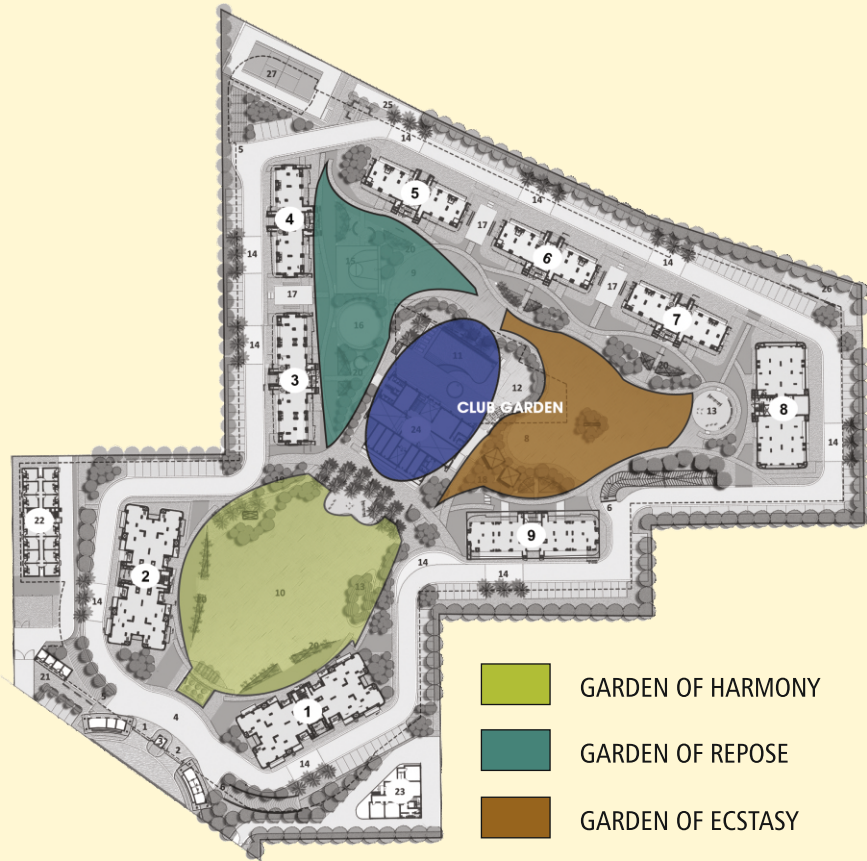
Chintels Serenity is designed to provide  
maximum sunlight to every apartment.



Perspective view: All images, landscapes, amenities and accessory visuals shown in the brochure are only indicative and subject to change as decided by the company or competent authority. We are offering for sale, unfurnished apartments not including add on such as furnished & fixtures, unless specifically, incorporated in the agreement to sale.



# SERENE LANDSCAPE

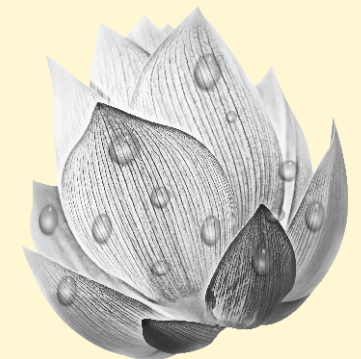


The exquisite landscape is carefully and creatively designed to create an ambience that allows an easy transition from the chaos of the outside world to the tranquil oasis of serenity.

There is abundance of greenery in three main concept gardens - The garden of Tranquility, The garden of Harmony and The Garden of Repose. Each garden is complete in itself and houses exquisite flora its residents. A sculpture is placed quality at each garden providing unique identity.

The gardens take centre stage here and are ideal for community events and activities with specific areas for jogging, quiet place for yoga, play stations for kids and corners for pet parks.

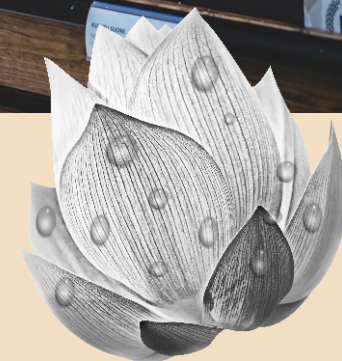
Trees and shrubs are selected to not only create aesthetic view but to attract birds and butterflies for natural habitation. A unique feature is the bamboo court where the bamboo groves are planted in the basement with ample space to grow above the ground level through the cut-out-sky-window thereby allowing natural sunlight in the basement.





# MODERN AMENITIES

A Spectrum of modern facilities ensures a harmonious and pleasant way of life. 24/7 power backup, treated water supply, in- house maintenance services and round - the - clock 3 tier security with CCTV provide a calming and secure environment for your family.







LUXURY. HARMONY. REDEFINED

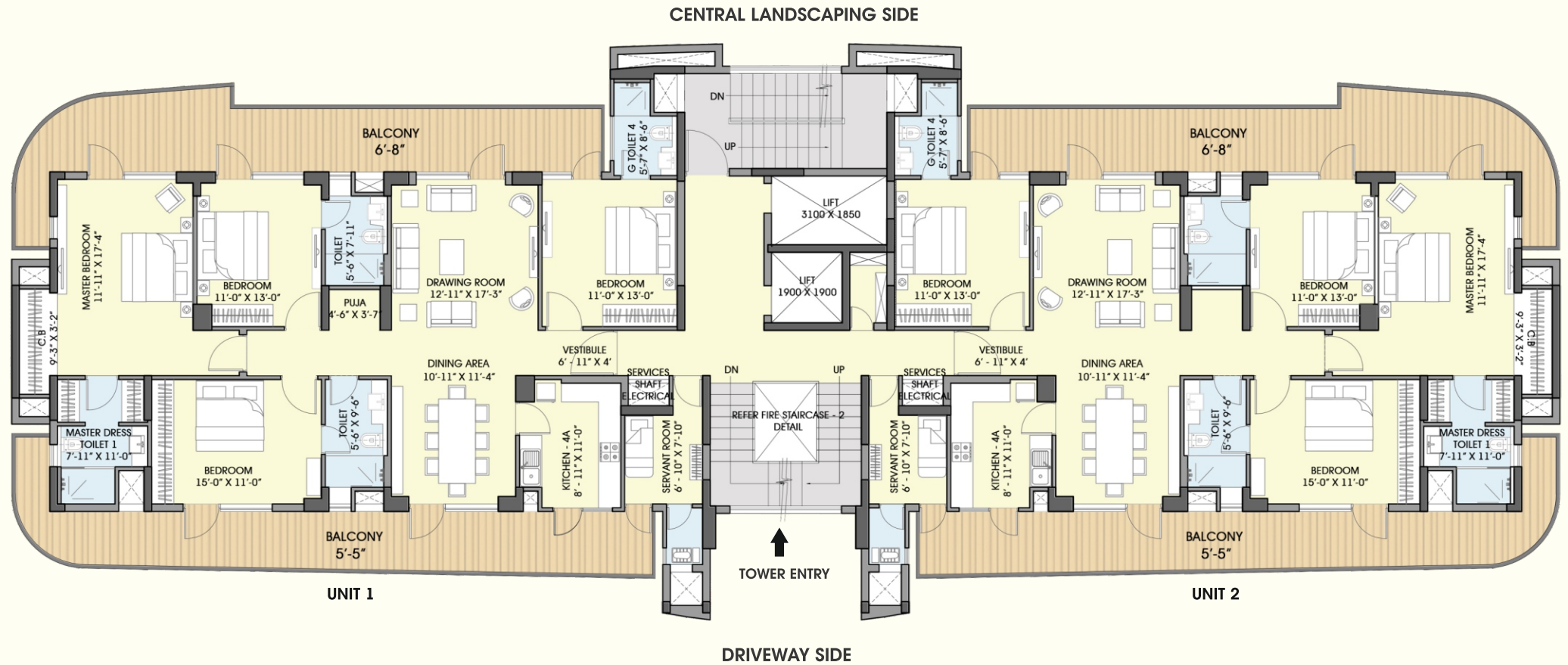
SECTOR 109, CHINTELS METROPOLIS, GURUGRAM

*Phase - I*

*(Tower - 3, 4 & 5)*



# FLOOR PLAN TOWER 3 (S + 20 FLOORS)



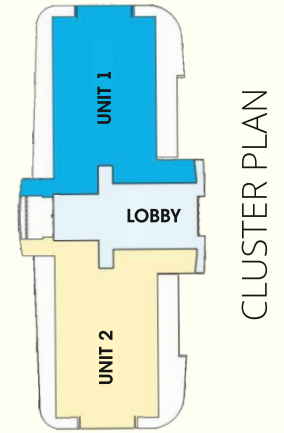
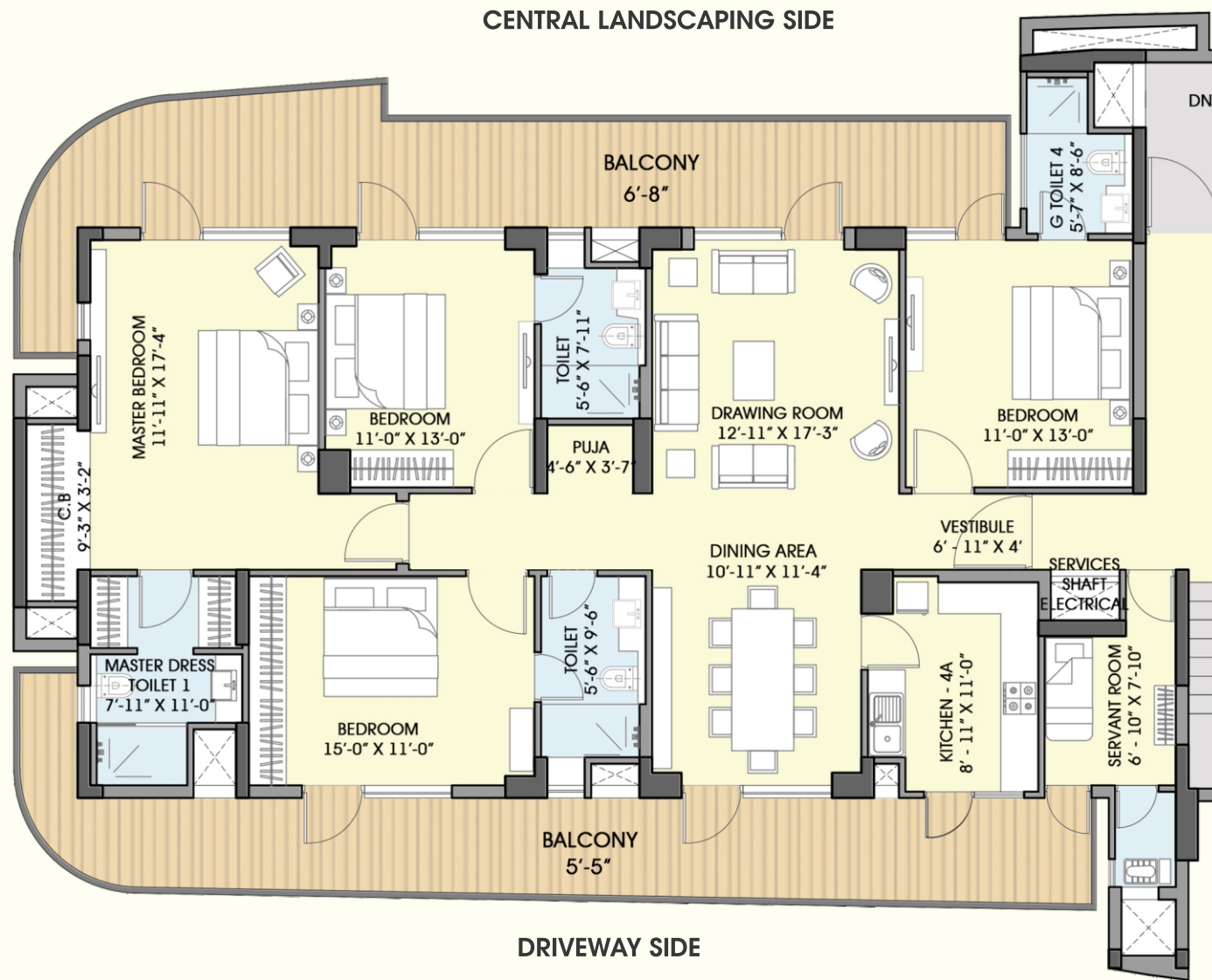
## 4 BHK UNIT + SERVANT ROOM

CARPET AREA	: 144.17 SQM (1551.84 SQFT)
BALCONY AREA	: 61.20 SQM (660.58 SQFT)
BUILT UP AREA	: 232.24 SQM (2499.8 SQFT)
SALEABLE AREA	: 271.74 SQM (2925 SQFT)





# FLOOR PLAN TOWER 3 (S + 20 FLOORS)

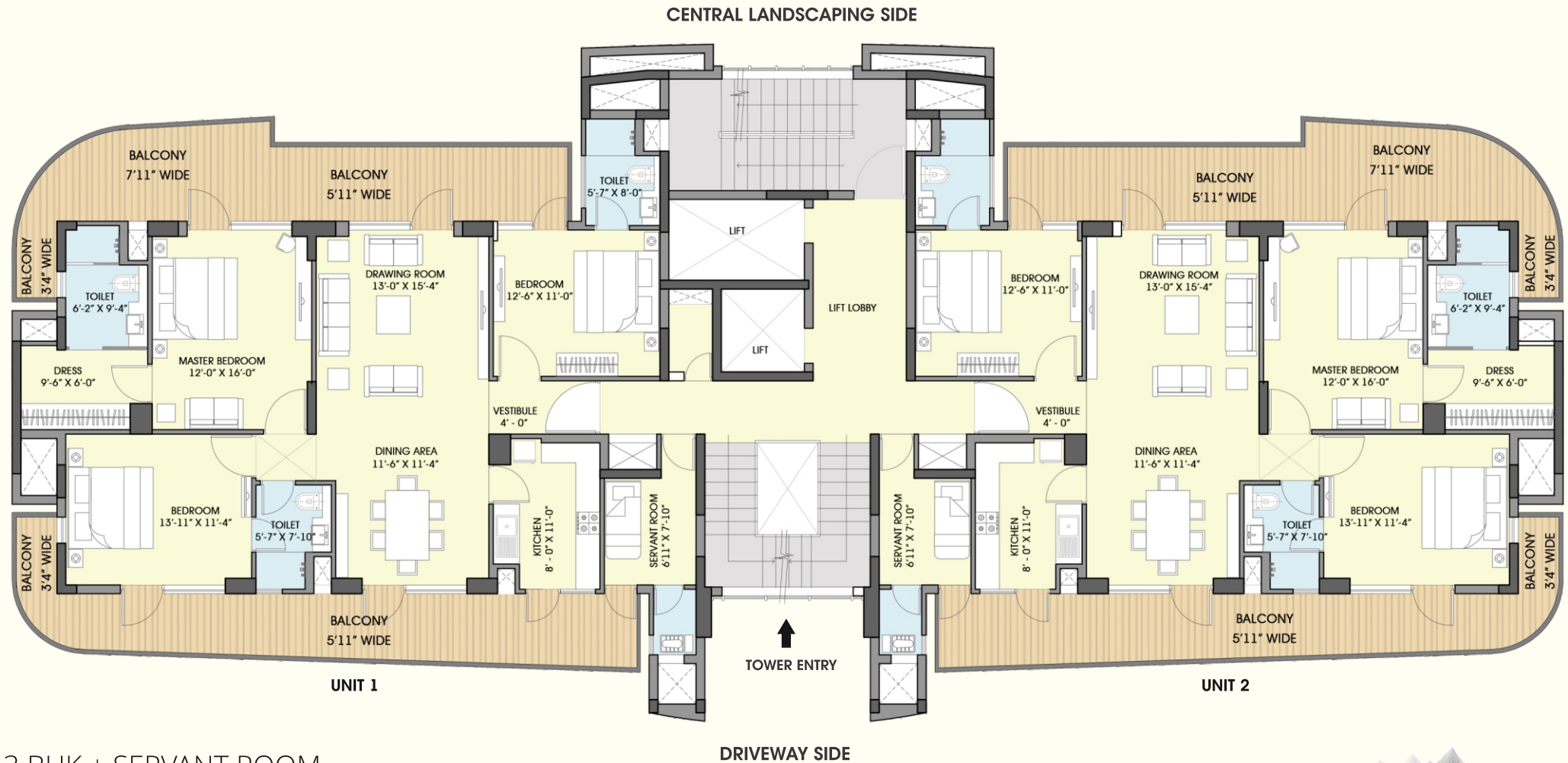


- 4 BHK UNIT + SERVANT ROOM
- CARPET AREA : 144.17 SQM (1551.84 SQFT)
- BALCONY AREA : 61.20 SQM (660.58 SQFT)
- BUILT UP AREA : 232.24 SQM (2499.8 SQFT)
- SALEABLE AREA : 271.74 SQM (2925 SQFT)

All floor plans, layout plans, images and specifications are indicative and are subject to change as decided by the company or competent authority and accordingly revisions may be necessary during construction of apartments.



# FLOOR PLAN TOWER 4 (S + 20 FLOORS)



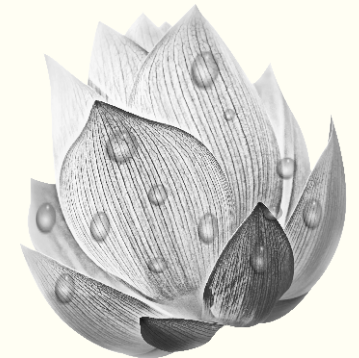
3 BHK + SERVANT ROOM

CARPET AREA : 114.81 SQM (1235.81 SQFT)

BALCONY AREA : 49.88 SQM ( 536.90 SQFT)

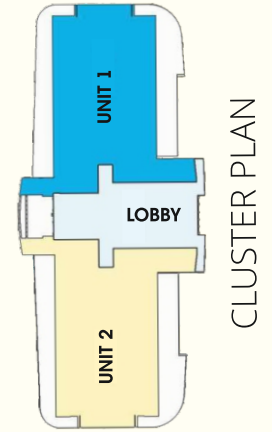
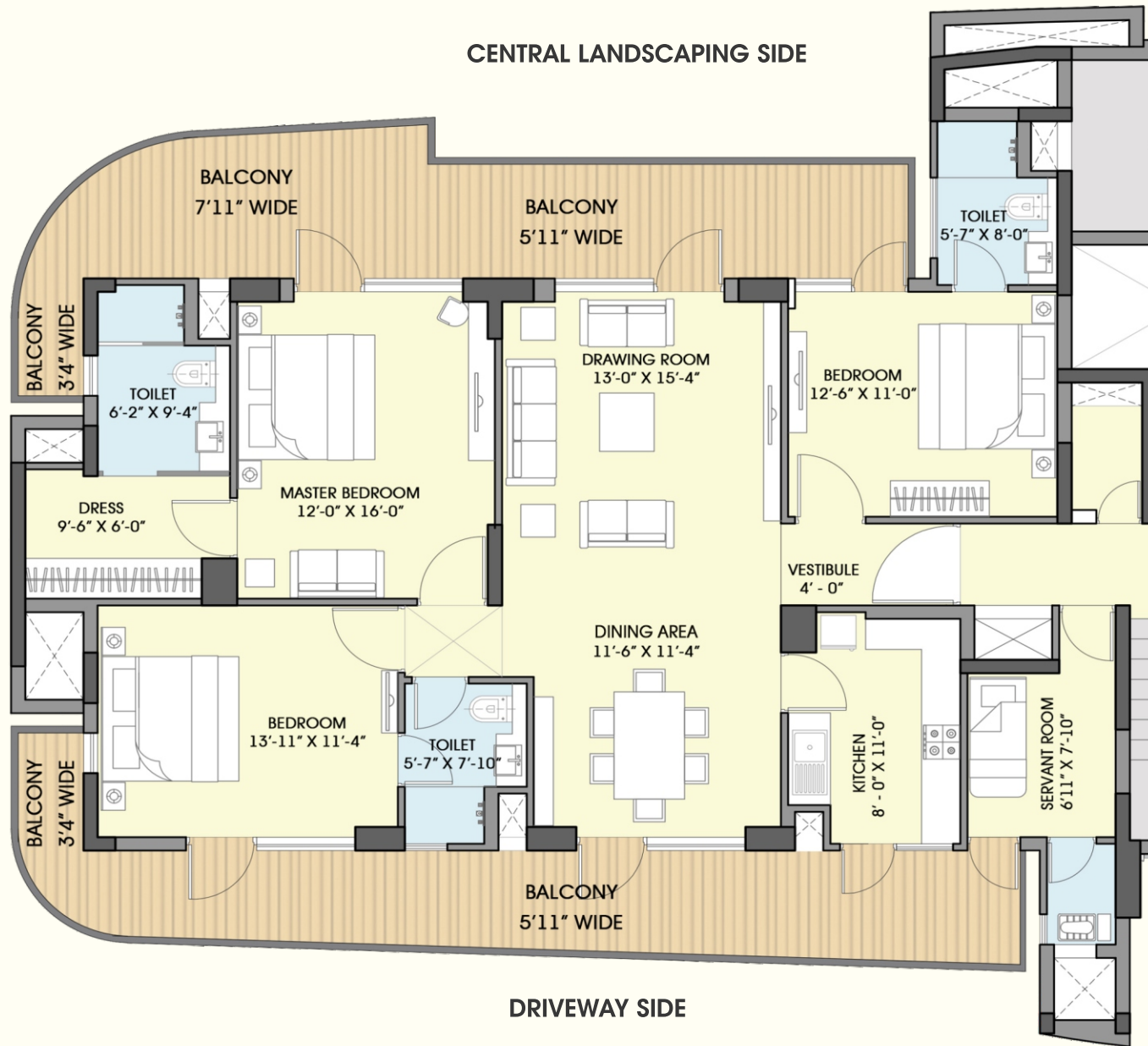
BUILT UP AREA : 178.32 SQM (1919.44 SQFT)

SALEABLE AREA : 220.64 SQM (2375 SQFT)





# FLOOR PLAN TOWER 4 (S + 20 FLOORS)



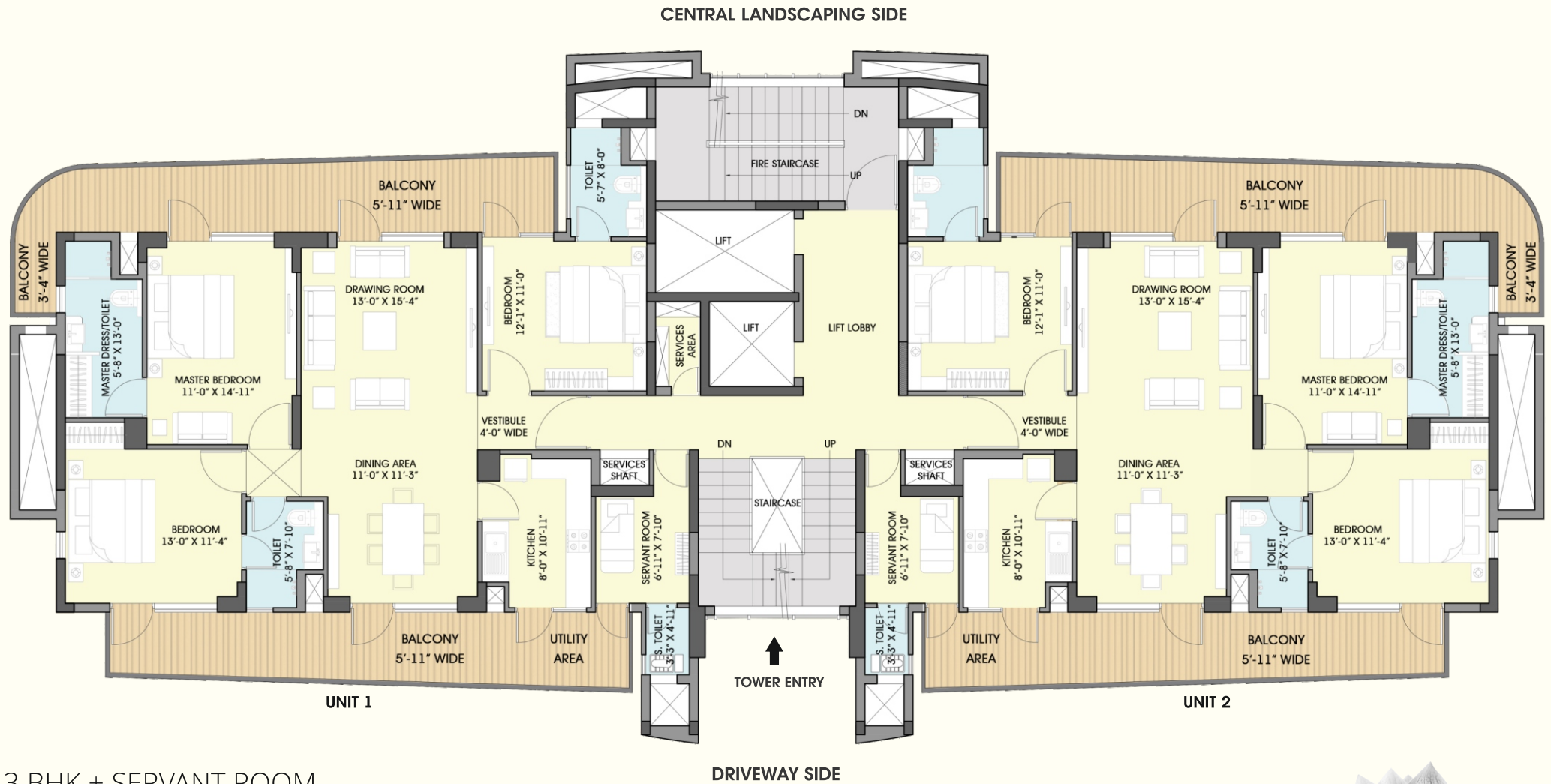
KEY PLAN

3 BHK + SERVANT ROOM

- CARPET AREA : 114.81 SQM (1235.81 SQFT)
- BALCONY AREA : 49.88 SQM ( 536.90 SQFT)
- BUILT UP AREA : 178.32 SQM (1919.44 SQFT)
- SALEABLE AREA : 220.64 SQM (2375 SQFT)



# FLOOR PLAN TOWER 5 (S + 20 FLOORS)



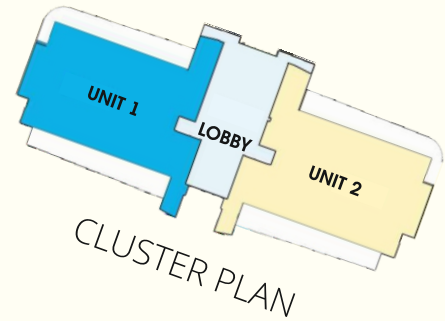
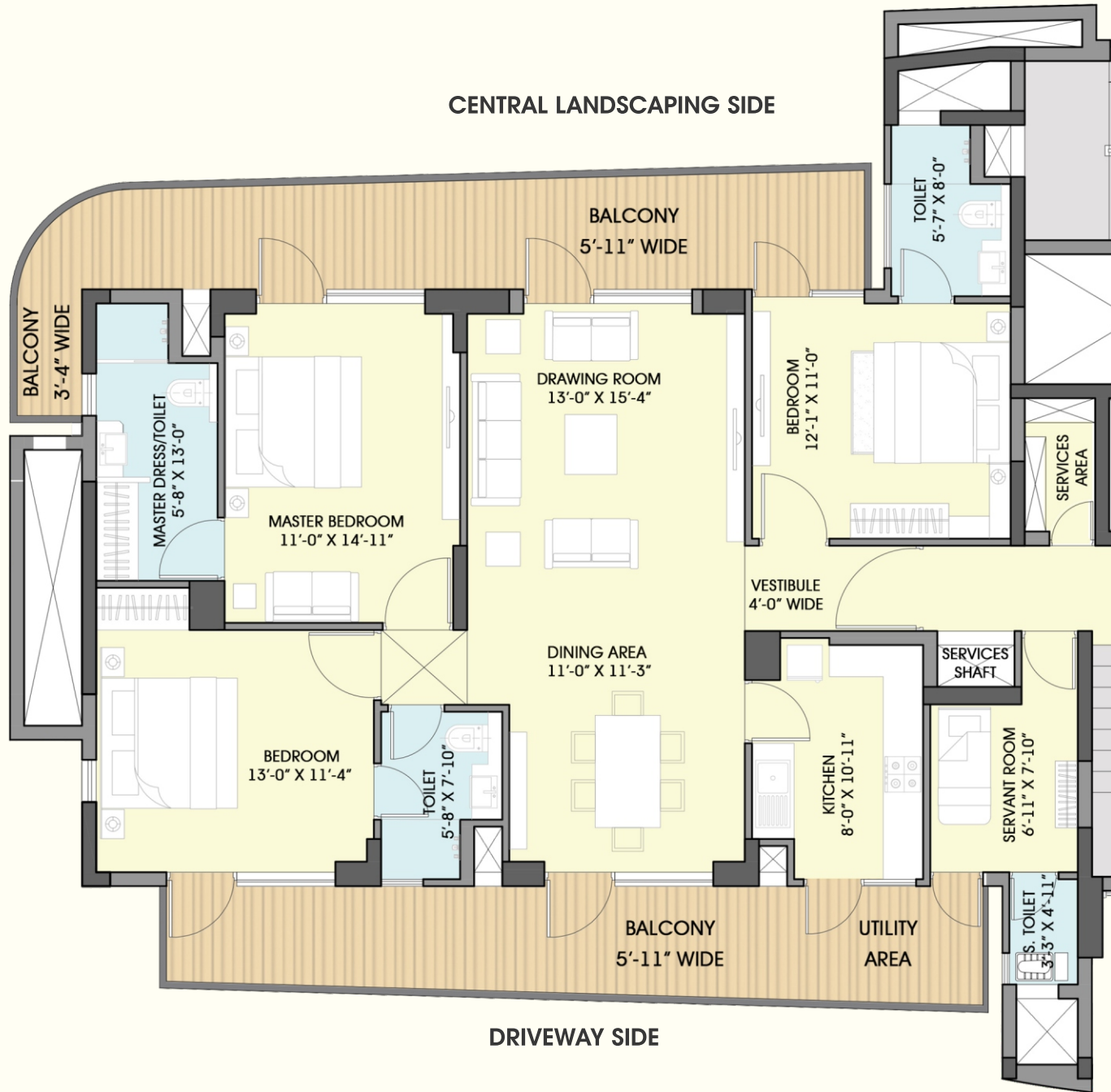
3 BHK + SERVANT ROOM

- CARPET AREA : 105.17 SQM (1132 SQFT)
- BALCONY AREA : 40.07 SQM (431.31 SQFT)
- BUILT UP AREA : 160.86 SQM (1731.5 SQFT)
- SALEABLE AREA : 195.09 SQM (2100 SQFT)





# FLOOR PLAN TOWER 5 (S + 20 FLOORS)



- 3 BHK + SERVANT ROOM
- CARPET AREA : 105.17 SQM (1132 SQFT)
- BALCONY AREA : 40.07 SQM (431.31 SQFT)
- BUILT UP AREA : 160.86 SQM (1731.5 SQFT)
- SALEABLE AREA : 195.09 SQM (2100 SQFT)

All floor plans, layout plans, images and specifications are indicative and are subject to change as decided by the company or competent authority and accordingly revisions may be necessary during construction of apartments.



# SPECIFICATIONS FOR TOWER 3, 4, & 5

## DRAWING & DINING AREA

Floor	High Quality Engineered Stone
Walls	Smooth surface with POP Punning and Acrylic Emulsion Paint
Ceiling	Smooth surface with POP Punning and Acrylic Emulsion Paint

## BEDROOMS

Floor	Laminated Wooden Flooring and Wooden Skirting
Walls	Smooth surface with POP Punning and Acrylic Emulsion Paint
Ceiling	Smooth surface with POP Punning and Acrylic Emulsion Paint
Fittings	Modular Wardrobes in all Bedrooms

## KITCHEN

Floor	Anti - Skid Ceramic Tiles
Walls	Ceramic Tiles up to 2' above the counter, rest smooth surface with Acrylic Emulsion Paint
Ceiling	Smooth surface with POP Punning and Acrylic Emulsion Paint
Fitting & Fixtures	Stainless Steel Sink with CP fittings Premium Modular Kitchen with Hob & Chimney

## BATHROOMS

Floor	Anti - Skid Ceramic Tiles
Walls	High Quality Ceramic Tiles
Ceiling	False Ceiling with Grid Panels
Fitting & Fixtures	Single Lever CP fittings - Granite Counter- Premium Sanitary Wares – Shower enclosure in Master Bathroom- Conventional fittings & Western WC for Servant- Toilet – Provision for Exhaust Fan in all the bathrooms

## SERVANT ROOM

Floor	Ceramic Tiles
Wall & Ceiling	Oil Bound Distemper

## BALCONIES

Floor	Anti - Skid Ceramic Tiles
Wall	Weather Proof Texture Paint
Railing	M.S Railing with Handrail

## LIFT LOBBIES/ CORRIDORS

Floors	Granite
Wall	Granite/ Paint
Ceiling	Ceiling

## DOORS & WINDOWS

Main Door & Bed Room Doors	High quality hard Wood Frame with Veneer Finish, Flush/Molded Shutter and branded hardware fittings
External Interiors	High quality Aluminum Powder Coated Doors, Windows and Ventilators High quality hard Wood Frame with Flush/Molded Shutter and branded hardware fittings

## AIR CONDITIONING

VRV System	For all Bedrooms, Living and Dining areas
------------	---

## ELECTRICAL

Concealed Conduits with Copper Wires and Modular Switches/Sockets with sufficient points for power and lighting - Provision for Cable TV and Telephone Sockets- Provision for Chimney in Kitchen

## CLUB & SPORTS FACILITIES

Swimming Pool & Kids Pool with Change Room and Lockers - Well Equipped Gymnasium and Steam Room - Squash Court - Multipurpose Hall for Pre Function – Games Room- Meditation & Yoga - Basketball Court - Cricket Practice Net - Badminton Court - Tennis Court - Skating Rink

## AMENITIES & OTHER FACILITIES

24 x 7 Power Backup - 24 x 7 Treated Water Supply - Sewage Treatment Plant - Round- the-Clock 3 Tier Security with CCTV - Fire Detection and Fire Fighting System - Piped Gas Supply System - FTTH - High Speed Elevators - Estate office for Round-the-Clock maintenance services - Provision for Convenient Shopping

## STRUCTURE

Seismic Soundness	Earthquake resistant RCC framed structure with external Brick/Block walls
External Finish	Exterior grade Water Proof Premium Texture Paint

## FIRE FIGHTING SYSTEM

Wet Riser/Hydrants at all Floors - Automatic Sprinklers for all Apartments, Stilts and Basement - Fire Alarm & Public Announcement System in common areas - Smoke/Heat Detectors for Buildings

## ENVIRONMENT FRIENDLY MEASURES

Lush Green Landscaping - Rain Water Harvesting to recharge the Ground Water Table

Note: In the quest for excellence some of the specifications may have to be revised and are subject to change at the sole discretion of the Company / Architect.







LUXURY. HARMONY. REDEFINED

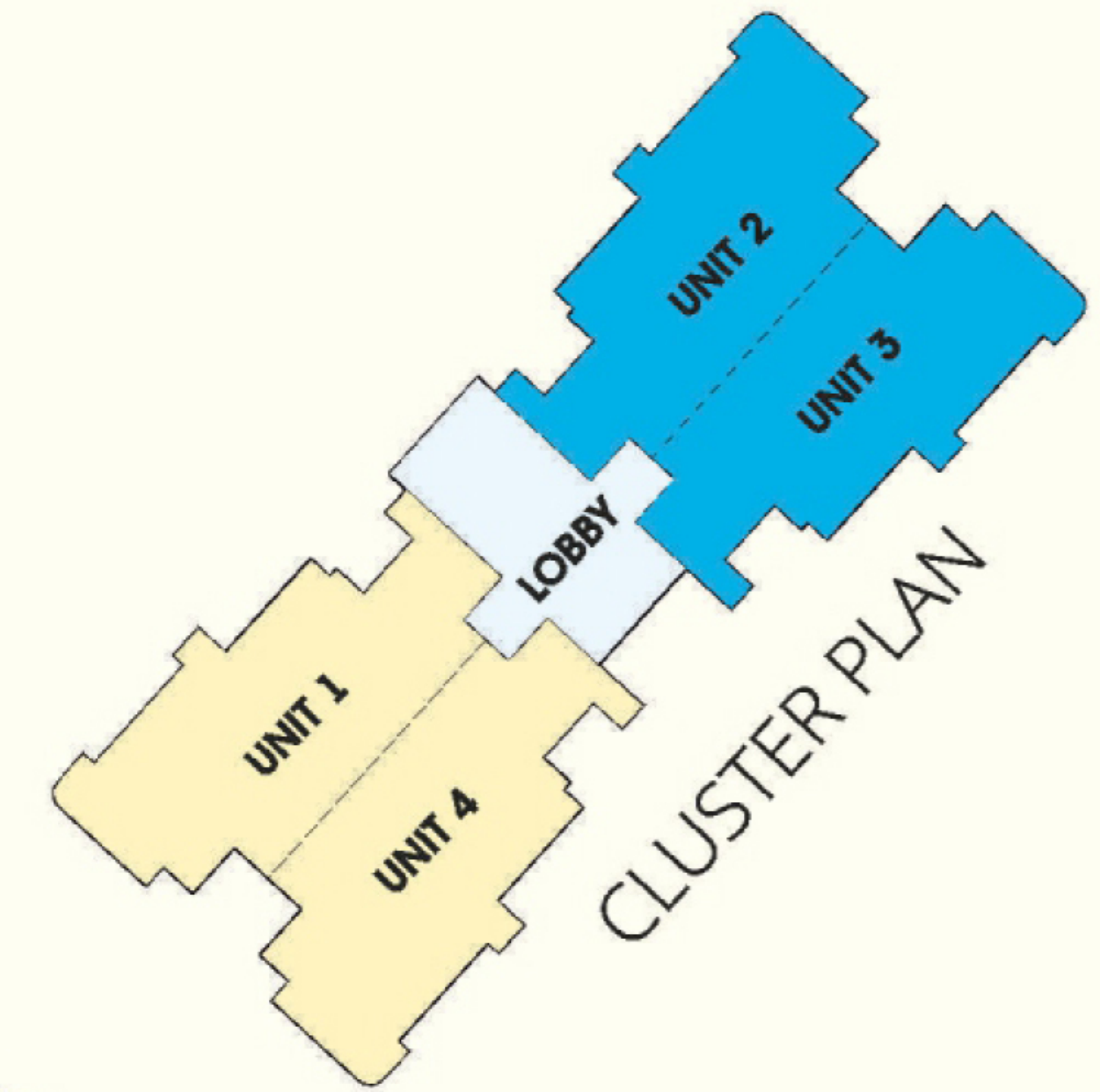
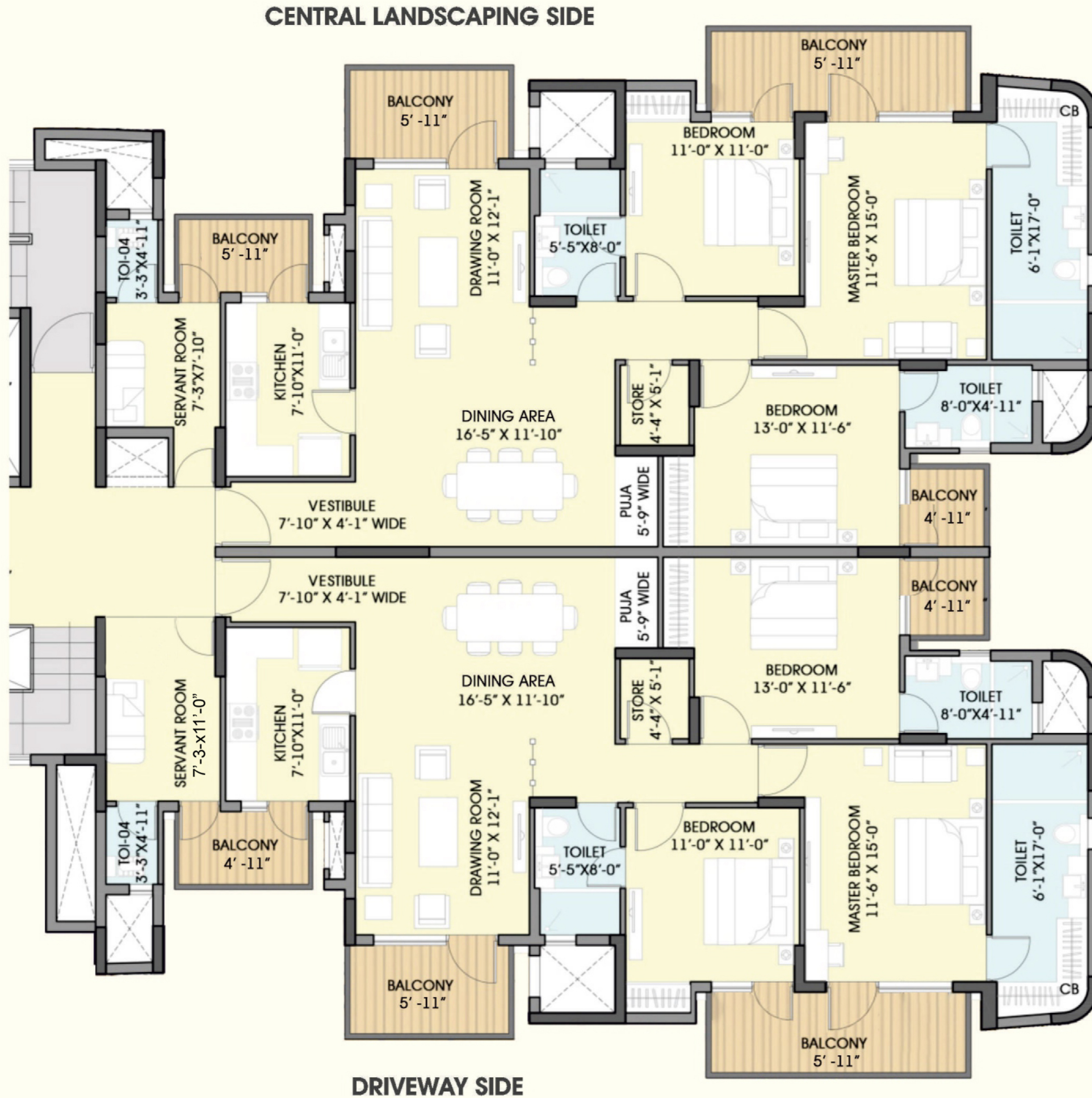
SECTOR 109, CHINTELS METROPOLIS, GURUGRAM

*Phase - II*

*(Tower - 1, 2, 6, 7, 8 & 9)*



# FLOOR PLAN TOWER 1 (S+ 17 FLOORS)



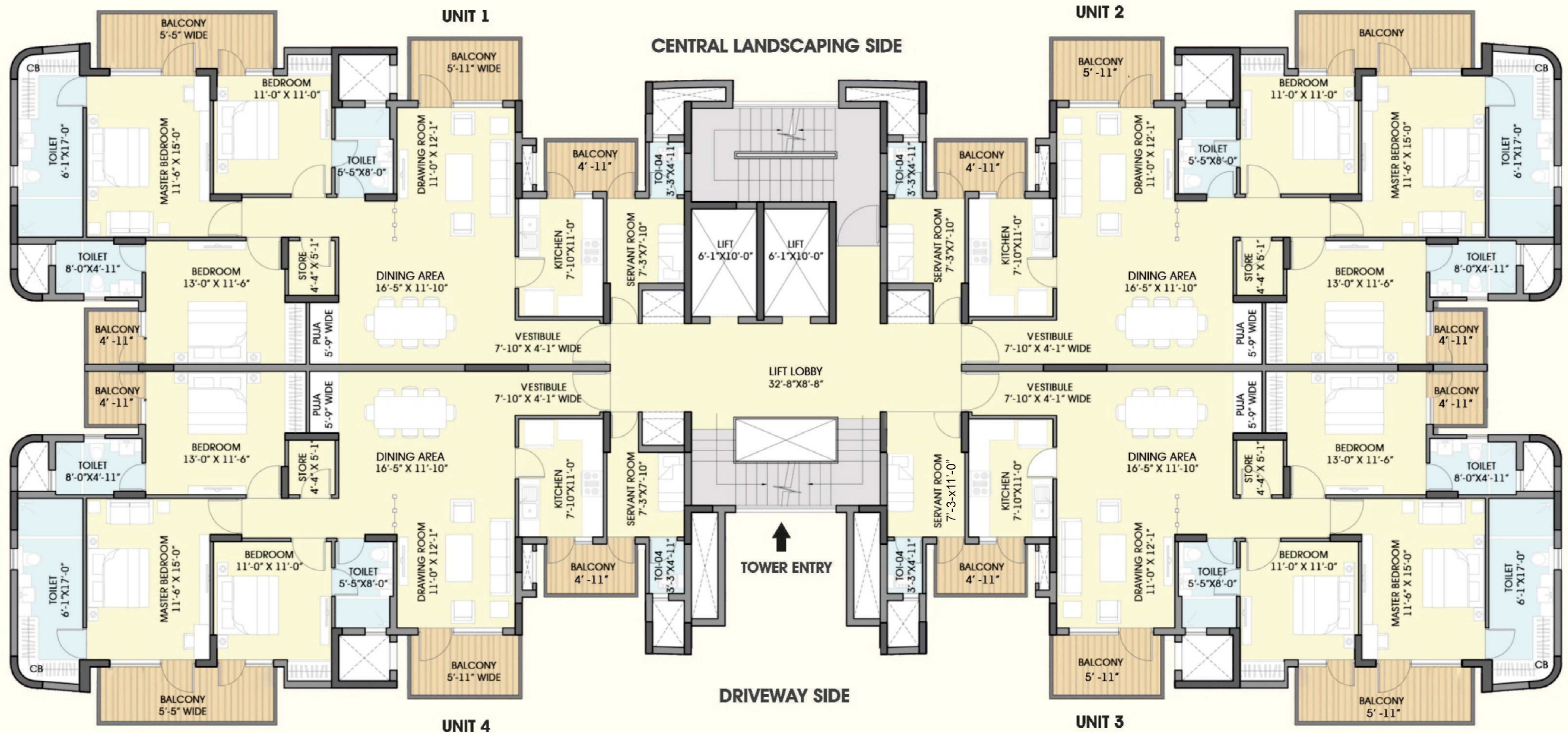
KEY PLAN

3 BHK + SERVANT ROOM

- CARPET AREA : 119.16 SQM (1282.63 SQFT)
- BALCONY ARE : 20.678 SQM (222.58 SQFT)
- BUILT UP AREA : 164.03 SQM (1765.62 SQFT)
- SALEABLE AREA : 181.623 SQM (1955 SQFT)



# FLOOR PLAN TOWER 1 (S + 17 FLOORS)



## 3 BHK + SERVANT ROOM

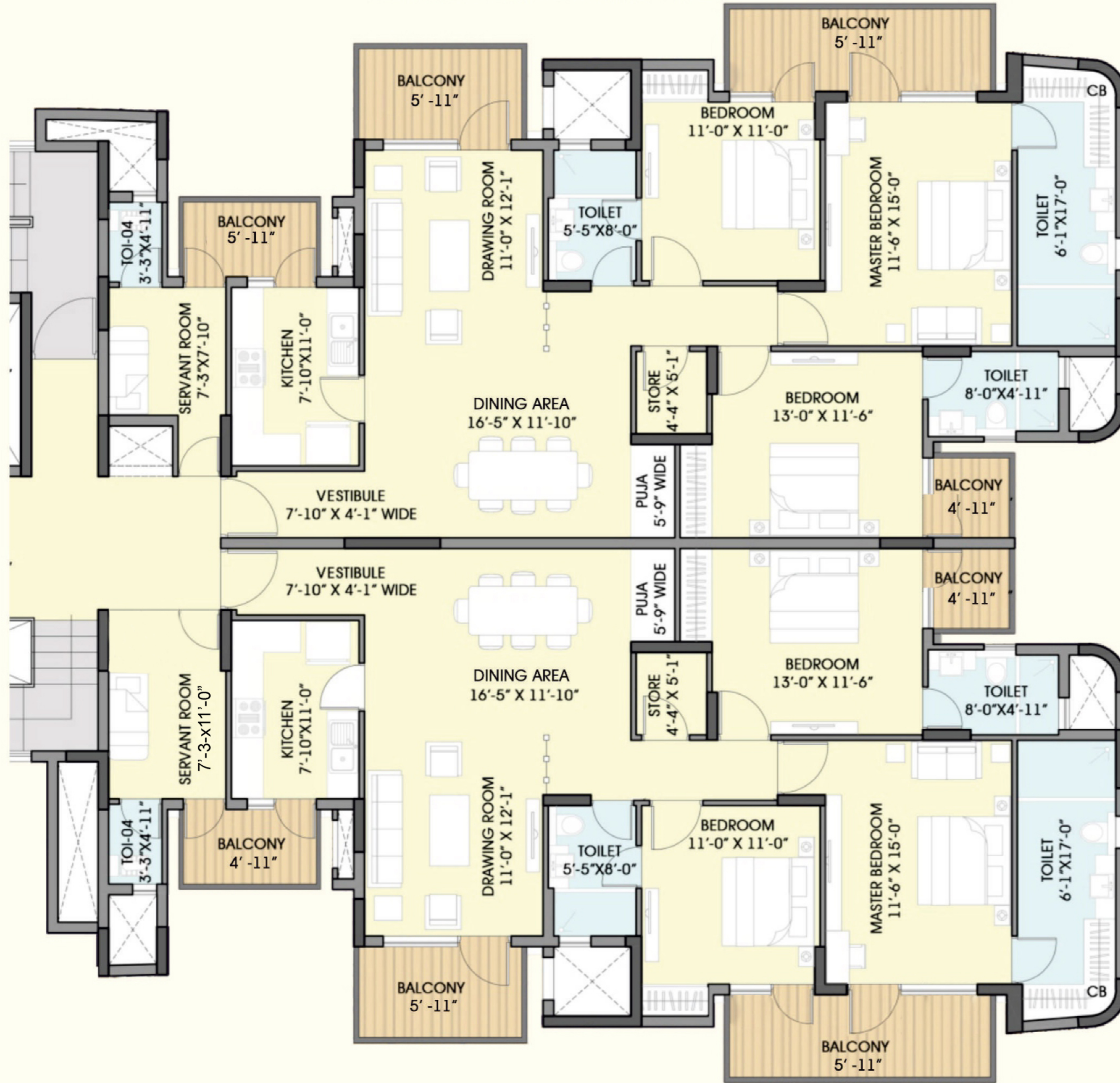
CARPET AREA : 119.16 SQM (1282.63 SQFT)  
 BALCONY ARE : 20.678 SQM (222.58 SQFT)  
 BUILT UP AREA : 164.03 SQM (1765.62 SQFT)  
 SALEABLE AREA : 181.623 SQM (1955 SQFT)



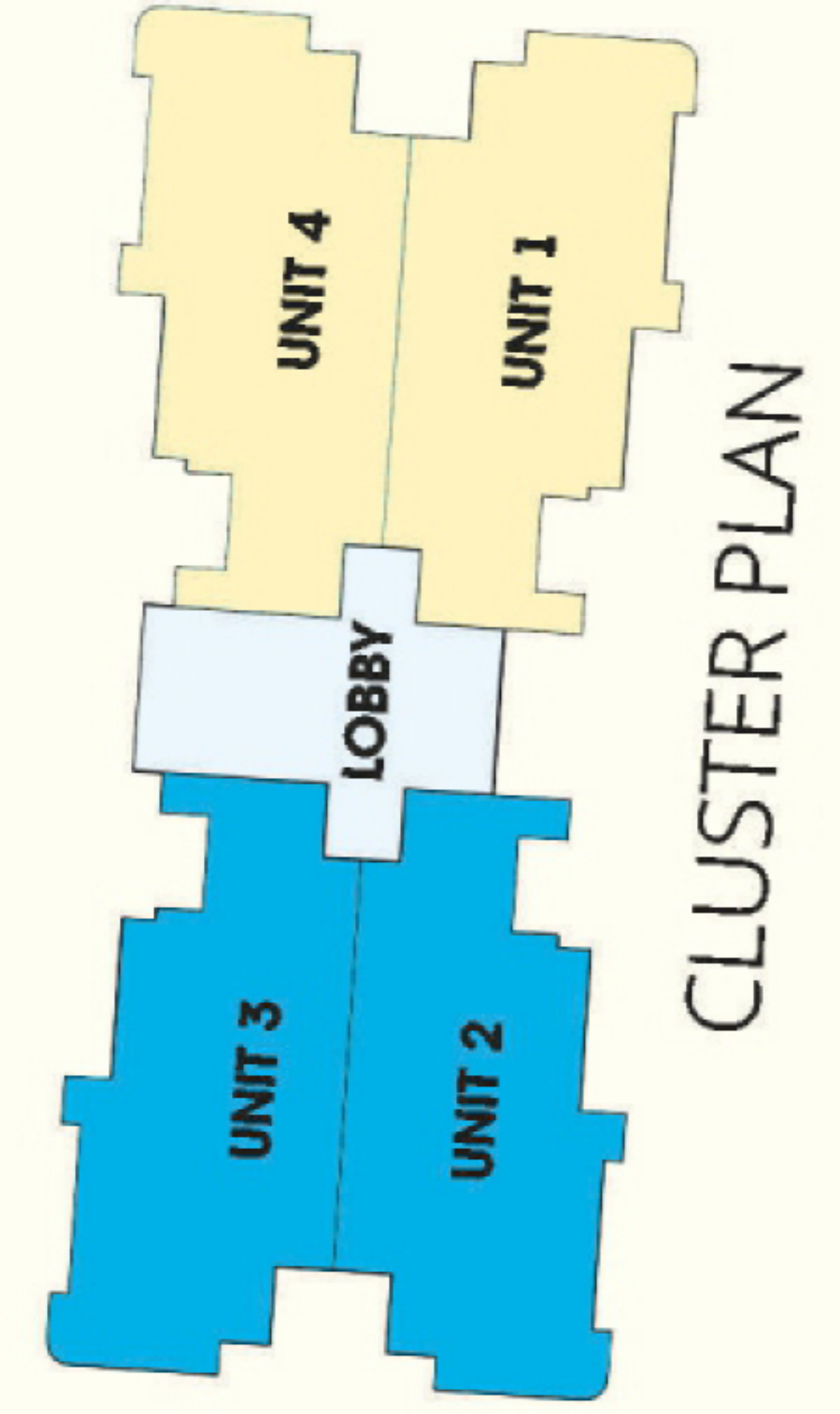


# FLOOR PLAN TOWER 2 (S + 17 FLOORS)

CENTRAL LANDSCAPING SIDE



DRIVEWAY SIDE



CLUSTER PLAN



KEY PLAN

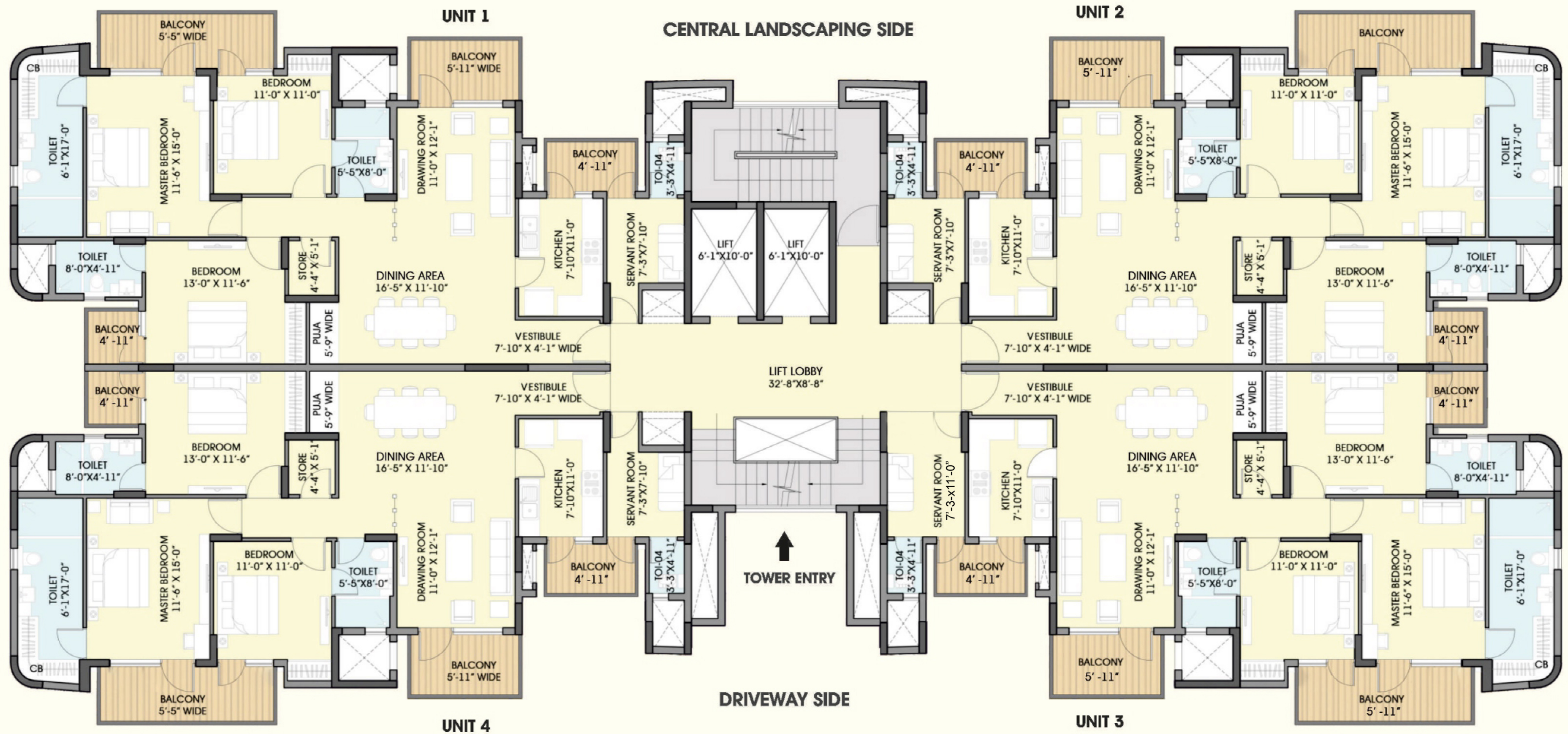
3 BHK + SERVANT ROOM

CARPET AREA	: 119.16 SQM (1282.63 SQFT)
BALCONY ARE	: 20.678 SQM (222.58 SQFT)
BUILT UP AREA	: 164.03 SQM (1765.62 SQFT)
SALEABLE AREA	: 181.623 SQM (1955 SQFT)

All floor plans, layout plans, images and specifications are indicative and are subject to change as decided by the company or competent authority and accordingly revisions may be necessary during construction of apartments.



# FLOOR PLAN TOWER 2 (S + 17 FLOORS)



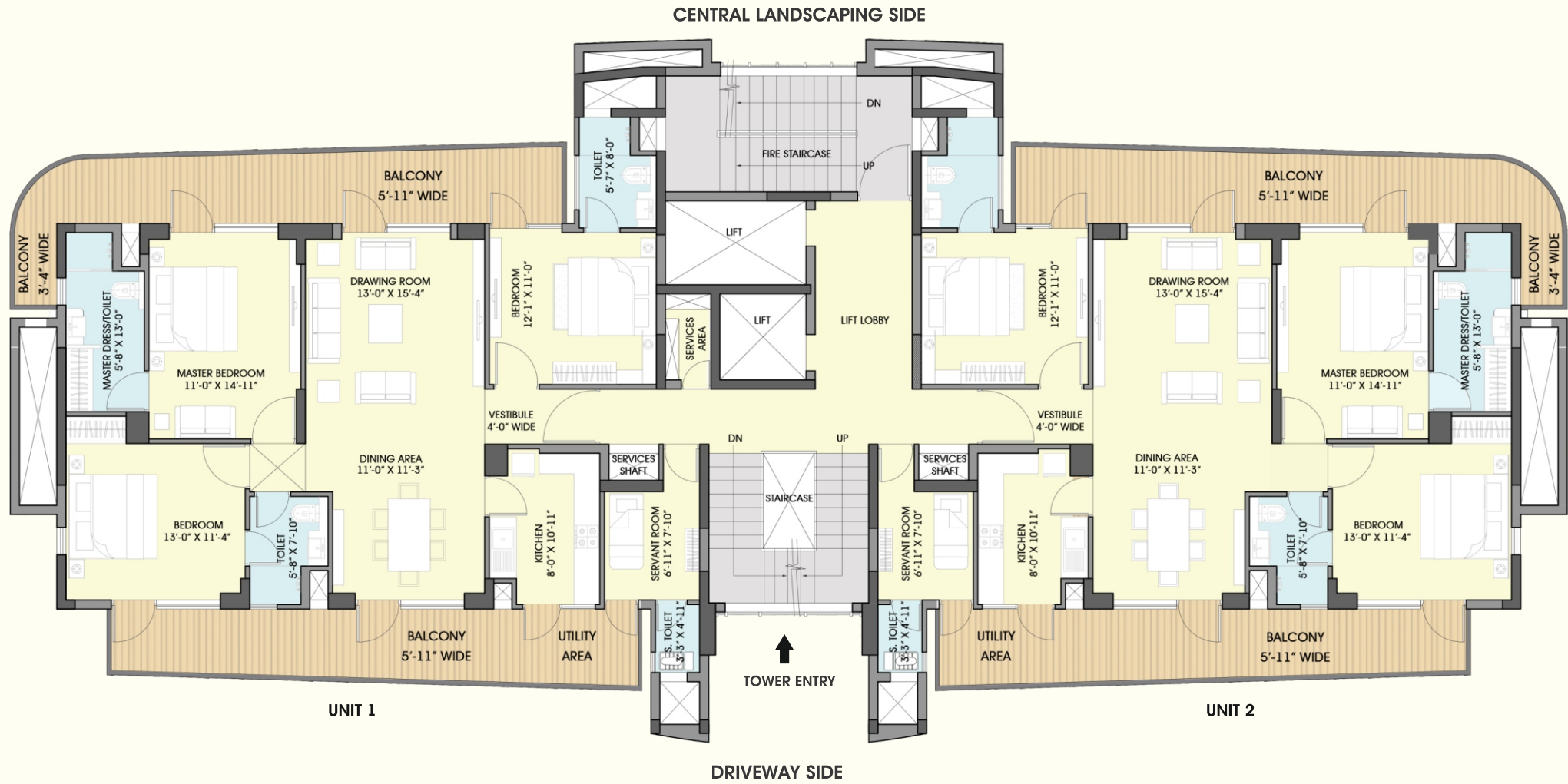
## 3 BHK + SERVANT ROOM

CARPET AREA : 119.16 SQM (1282.63 SQFT)  
 BALCONY ARE : 20.678 SQM (222.58 SQFT)  
 BUILT UP AREA : 164.03 SQM (1765.62 SQFT)  
 SALEABLE AREA : 181.623 SQM (1955 SQFT)



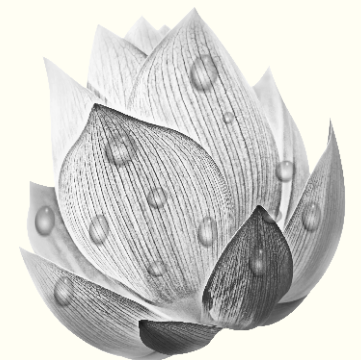


# FLOOR PLAN TOWER 6 (S + 20 FLOORS)



3 BHK + SERVANT ROOM

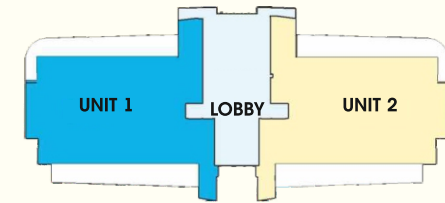
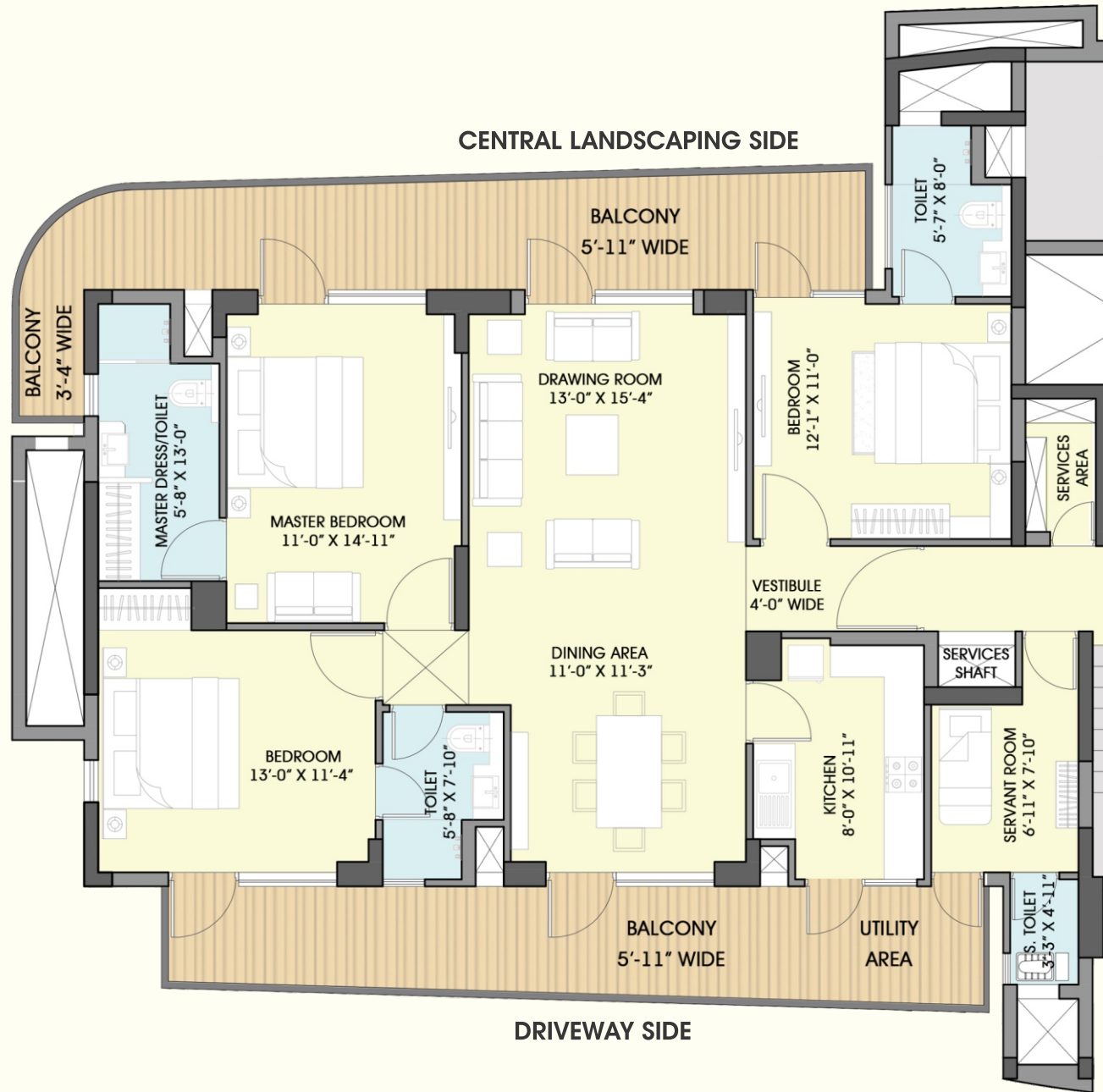
- CARPET AREA : 105.17 SQM (1132 SQFT)
- BALCONY AREA : 40.07 SQM (431.31 SQFT)
- BUILT UP AREA : 160.86 SQM (1731.5 SQFT)
- SALEABLE AREA : 195.09 SQM (2100 SQFT)



All floor plans, layout plans, images and specifications are indicative and are subject to change as decided by the company or competent authority and accordingly revisions may be necessary during construction of apartments.



# FLOOR PLAN TOWER 6 (S + 20 FLOORS)



CLUSTER PLAN



KEY PLAN

3 BHK + SERVANT ROOM

CARPET AREA : 105.17 SQM (1132 SQFT)

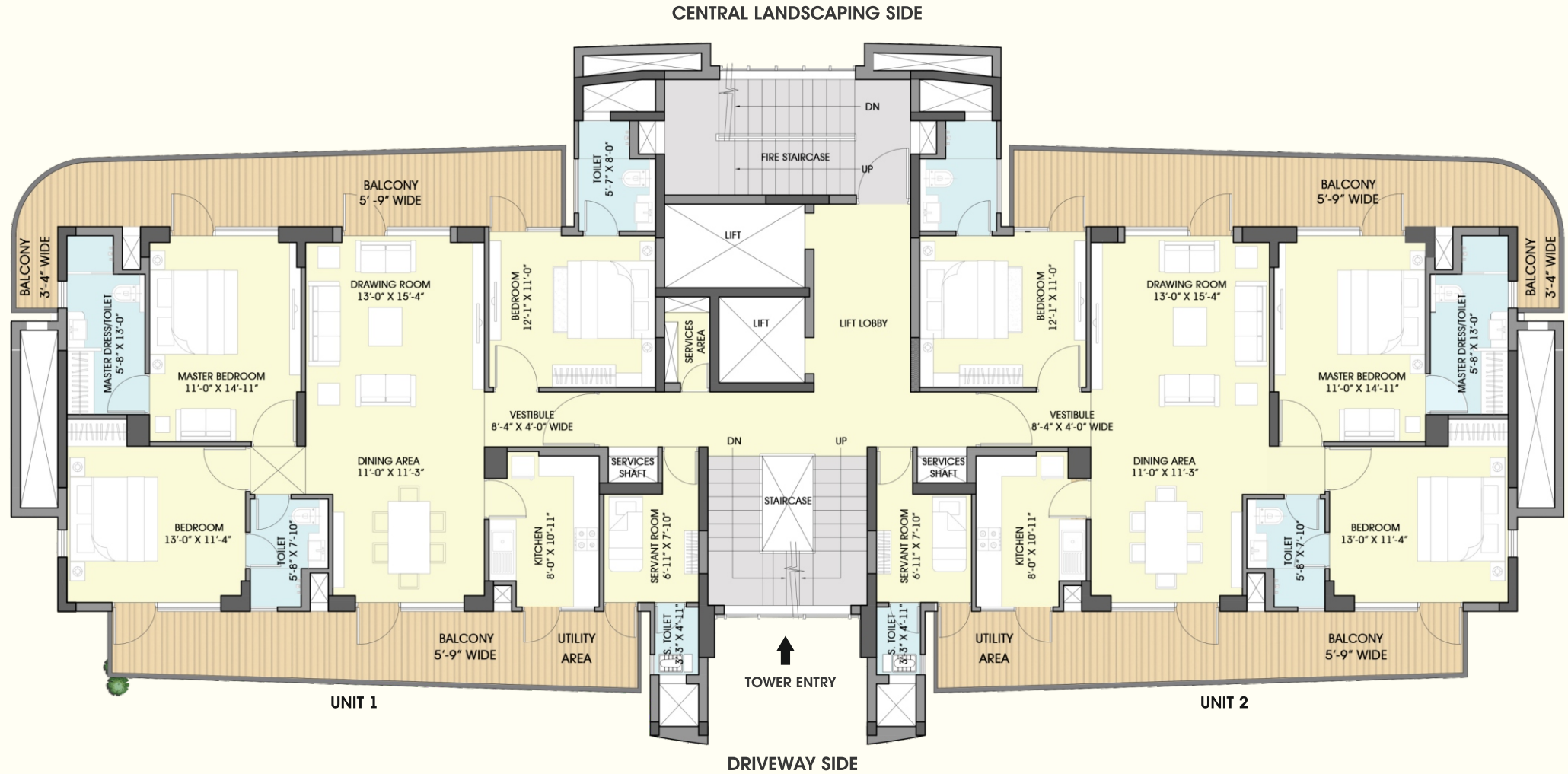
BALCONY AREA : 40.07 SQM (431.31 SQFT)

BUILT UP AREA : 160.86 SQM (1731.5 SQFT)

SALEABLE AREA : 195.09 SQM (2100 SQFT)

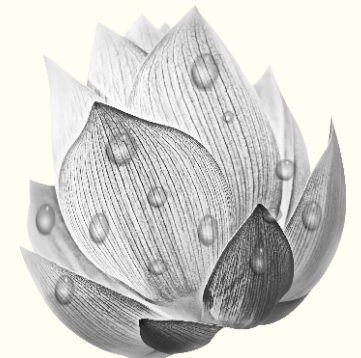


# FLOOR PLAN TOWER 7 (S + 20 FLOORS)



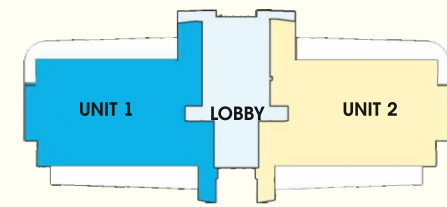
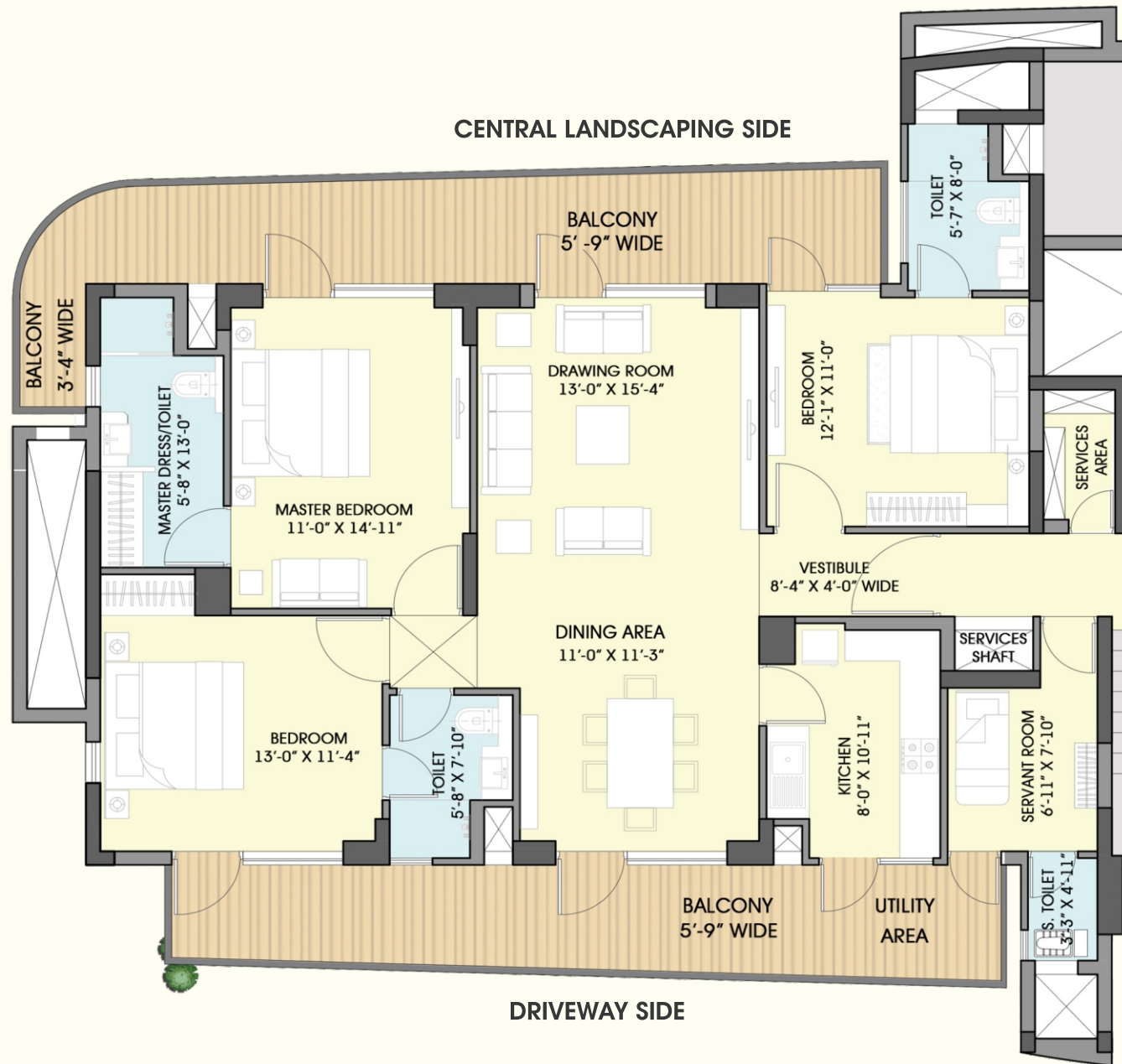
3 BHK + SERVANT ROOM

- CARPET AREA : 105.17 SQM (1132 SQFT)
- BALCONY AREA : 40.07 SQM (431.31 SQFT)
- BUILT UP AREA : 160.86 SQM (1731.5 SQFT)
- SALEABLE AREA : 195.09 SQM (2100 SQFT)





# FLOOR PLAN TOWER 7 (S + 20 FLOORS)



CLUSTER PLAN



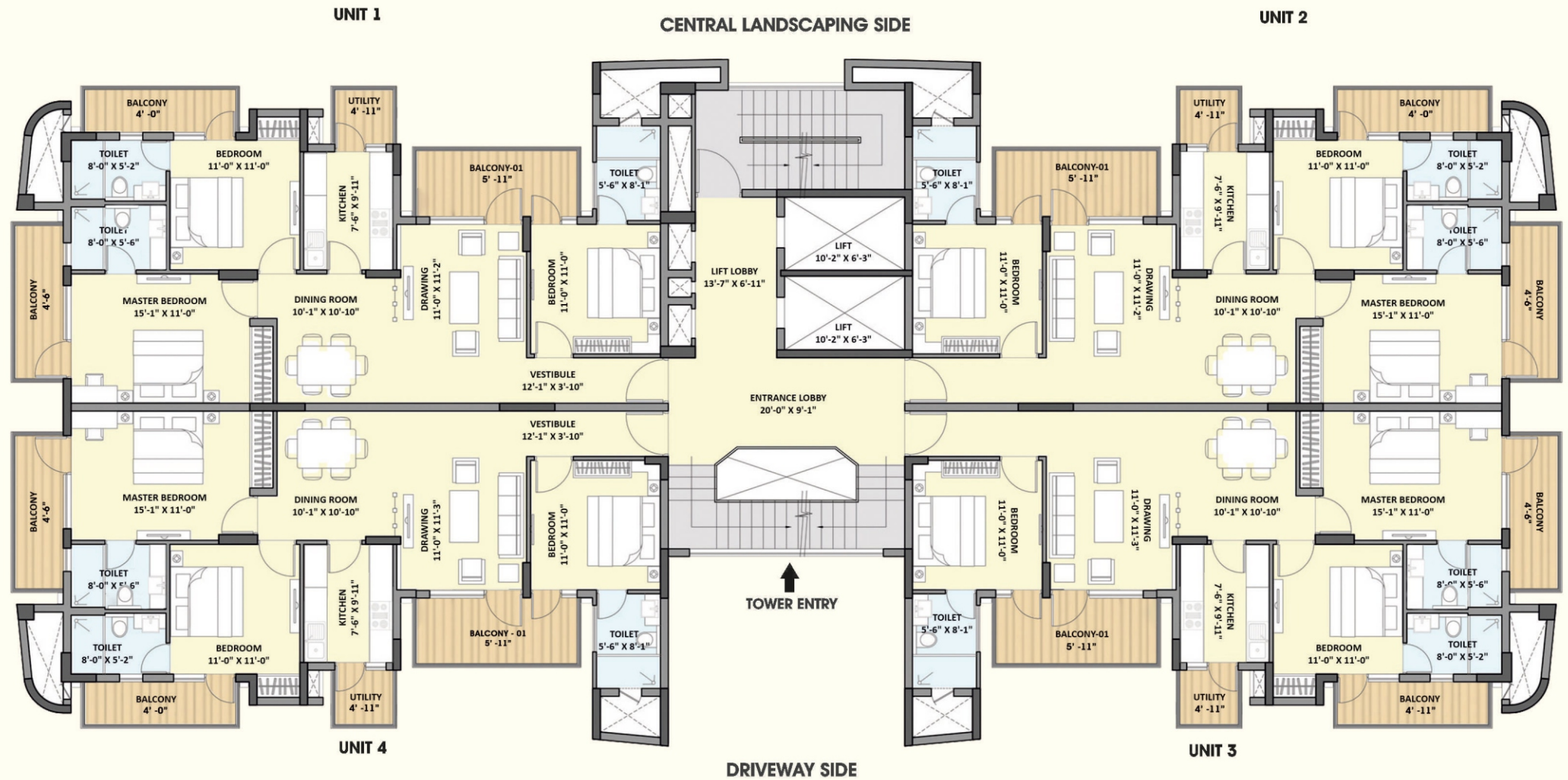
KEY PLAN

- 3 BHK + SERVANT ROOM
- CARPET AREA : 105.17 SQM (1132 SQFT)
- BALCONY AREA : 40.07 SQM (431.31 SQFT)
- BUILT UP AREA : 160.86 SQM (1731.5 SQFT)
- SALEABLE AREA : 195.09 SQM (2100 SQFT)

All floor plans, layout plans, images and specifications are indicative and are subject to change as decided by the company or competent authority and accordingly revisions may be necessary during construction of apartments.



# FLOOR PLAN TOWER 8(S + 18 FLOORS)



3 BHK

CARPET AREA : 89.92 SQM (967.89 SQFT)

BALCONY AREA : 20.89 SQM (224.86 SQFT)

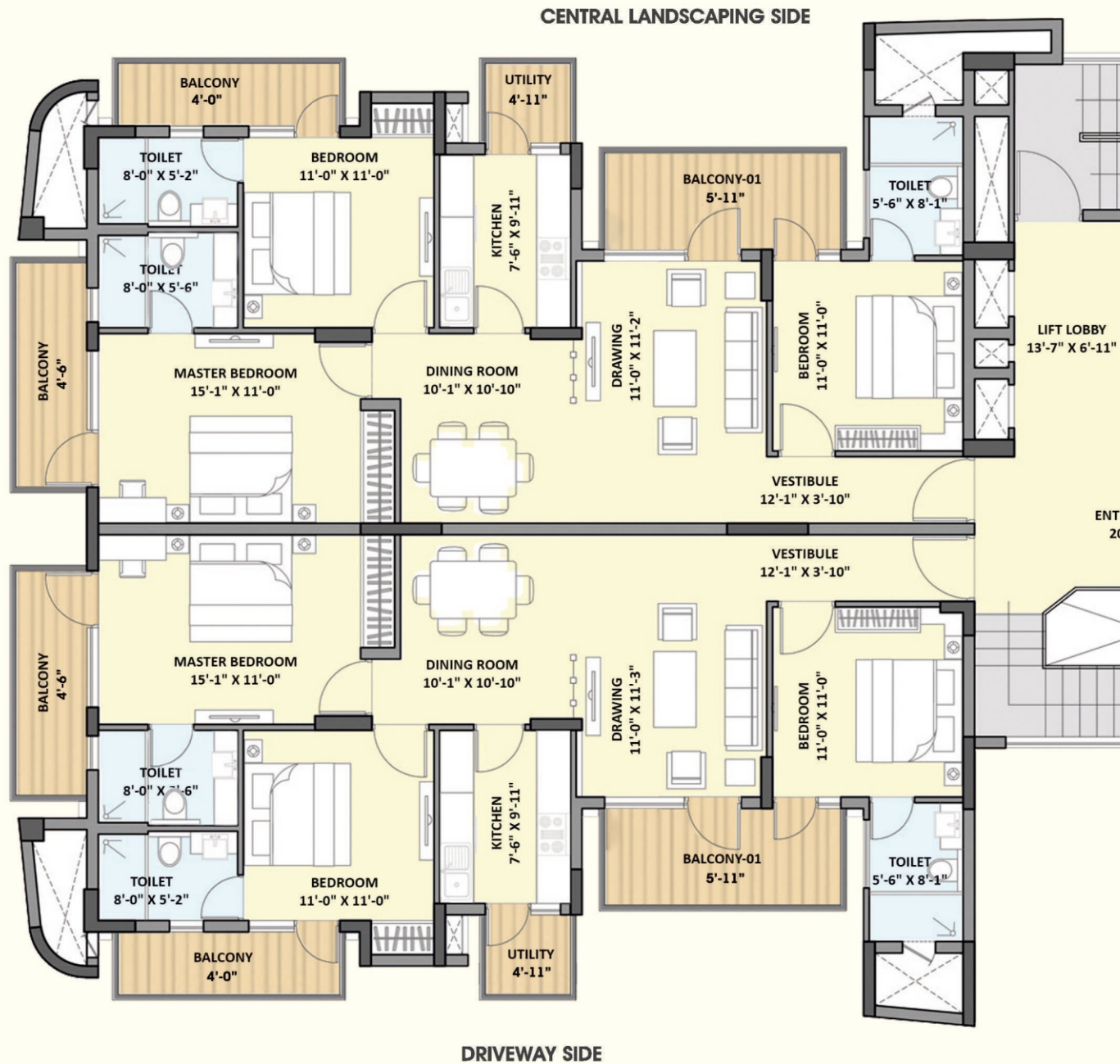
BUILT UP AREA : 121.44 SQM (1307.18 SQFT)

SALEABLE AREA : 147.71 SQM (1590 SQFT)





# FLOOR PLAN TOWER 8 (S + 18 FLOORS)



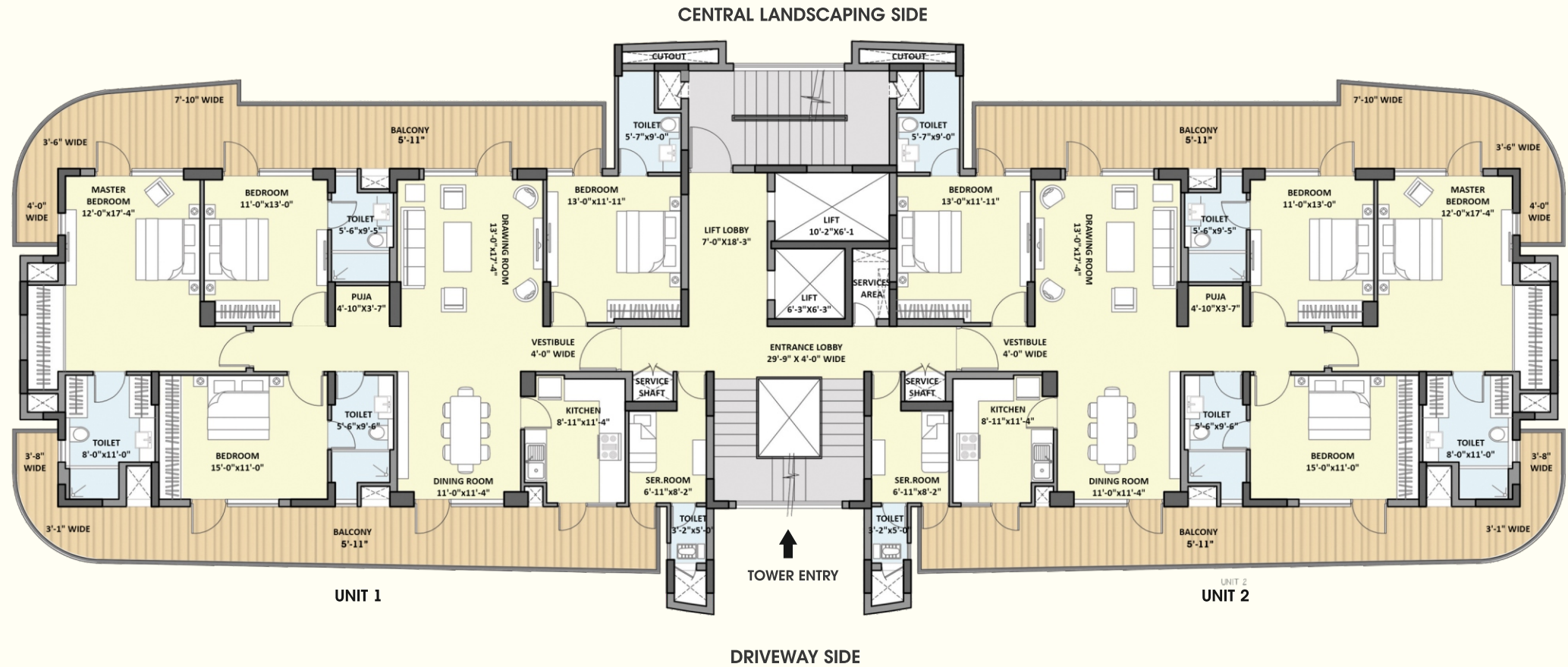
KEY PLAN

- 3 BHK
- CARPET AREA : 89.92 SQM (967.89 SQFT)
- BALCONY AREA : 20.89 SQM (224.86 SQFT)
- BUILT UP AREA : 121.44 SQM (1307.18 SQFT)
- SALEABLE AREA : 147.71 SQM (1590 SQFT)

All floor plans, layout plans, images and specifications are indicative and are subject to change as decided by the company or competent authority and accordingly revisions may be necessary during construction of apartments.



# FLOOR PLAN TOWER 9 (S + 18 FLOORS)



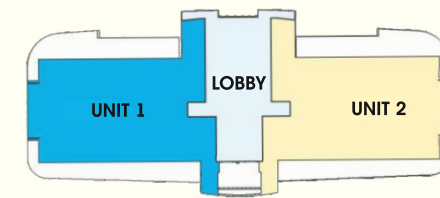
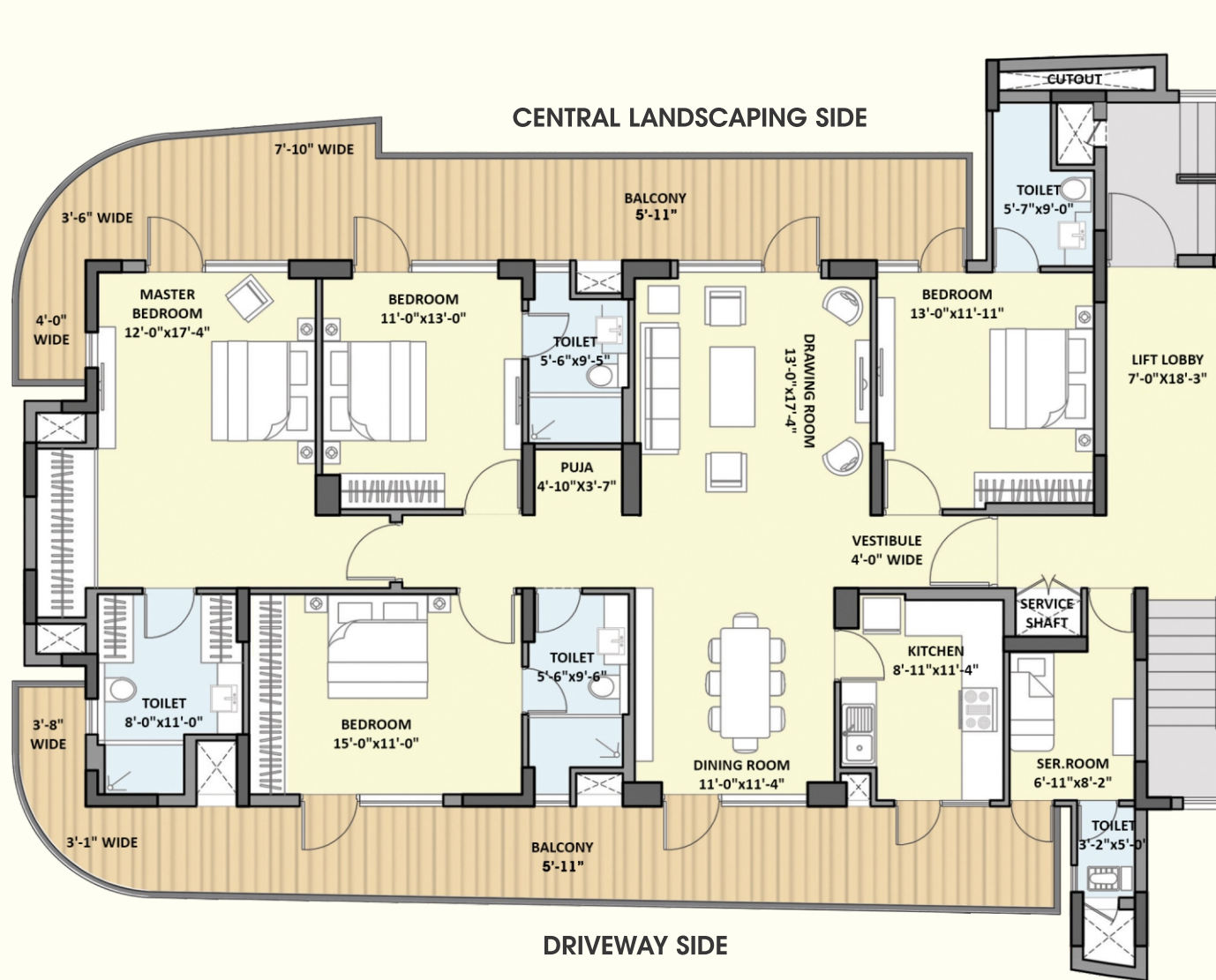
4 BHK

CARPET AREA : 144.17 SQM (1551.84 SQFT)  
 BALCONY AREA : 61.20 SQM (660.58 SQFT)  
 BUILT UP AREA : 232.24 SQM (2499.8 SQFT)  
 SALEABLE AREA : 271.74 SQM (2925 SQFT)





# FLOOR PLAN TOWER 9 (S + 18 FLOORS)



CLUSTER PLAN



KEY PLAN

4 BHK

CARPET AREA	: 144.17 SQM (1551.84 SQFT)
BALCONY AREA	: 61.20 SQM (660.58 SQFT)
BUILT UP AREA	: 232.24 SQM (2499.8 SQFT)
SALEABLE AREA	: 271.74 SQM (2925 SQFT)



# SPECIFICATIONS FOR TOWER 1, 2, 6, 7, 8 & 9

## DRAWING & DINING AREA

Floor	High Quality Engineered Stone
Walls	Smooth surface with POP Punning and Acrylic Emulsion Paint
Ceiling	Smooth surface with POP Punning and Acrylic Emulsion Paint

## BEDROOMS

Floor	Laminated Wooden Flooring and Wooden Skirting
Walls	Smooth surface with POP Punning and Acrylic Emulsion Paint
Ceiling	Smooth surface with POP Punning and Acrylic Emulsion Paint

## KITCHEN

Floor	Anti - Skid Ceramic Tiles
Walls	Ceramic Tiles up to 2' above the counter, rest smooth surface with Acrylic Emulsion Paint
Ceiling	Smooth surface with POP Punning and Acrylic Emulsion Paint
Fitting & Fixtures	Stainless Steel Sink with CP fittings

## BATHROOMS

Floor	Anti - Skid Ceramic Tiles
Walls	High Quality Ceramic Tiles
Ceiling	False Ceiling with Grid Panels
Fitting & Fixtures	Single Lever CP fittings - Granite Counter- Premium Sanitary Wares – Conventional fittings & Western WC for Servant Toilet – Provision for Exhaust Fan in all the bathrooms

## SERVANT ROOM

Floor	Ceramic Tiles
Wall & Ceiling	Oil Bound Distemper

## BALCONIES

Floor	Anti - Skid Ceramic Tiles
Wall	Weather Proof Texture Paint
Railing	M.S Railing with Handrail

## LIFT LOBBIES/ CORRIDORS

Floors	Granite
Wall	Granite/ Paint
Ceiling	Ceiling

## DOORS & WINDOWS

Main Door & Bed Room Doors	High quality hard Wood Frame with Veneer Finish Flush/Molded Shutter and branded hardware fittings
External	High quality Aluminum Powder Coated Doors, Windows and Ventilators
Interiors	High quality hard Wood Frame with Flush/Molded Shutter and branded hardware fittings

## ELECTRICAL

Provision for Split AC in living & all bed rooms- Concealed Conduits with Copper Wires and Modular Switches/sockets with sufficient points for power and lighting - Provision for Cable TV and Telephone Sockets- Provision for Chimney in Kitchen

## CLUB & SPORTS FACILITIES

Swimming Pool & Kids Pool with Change Room and Lockers - Well Equipped Gymnasium and Steam Room - Squash Court - Multipurpose Hall for Pre Function – Games Room- Meditation & Yoga - Basketball Court - Cricket Practice Net - Badminton Court - Tennis Court- Skating Rink

## AMENITIES & OTHER FACILITIES

24 x 7 Power Backup - 24 x 7 Treated Water Supply - Sewage Treatment Plant - Round- the-Clock 3 Tier Security with CCTV - Fire Detection and Fire Fighting System - Piped Gas Supply System - FTTH - High Speed Elevators - Estate office for Round-the-Clock maintenance services - Provision for Convenient Shopping

## STRUCTURE

Seismic Soundness	Earthquake resistant RCC framed structure with external Brick/Block walls
External Finish	Exterior grade Water Proof Premium Texture Paint

## FIRE FIGHTING SYSTEM

Wet Riser/Hydrants at all Floors - Automatic Sprinklers for all Apartments, Stilts and Basement - Fire Alarm & Public Announcement System in common areas - Smoke/Heat Detectors for Buildings

## ENVIRONMENT FRIENDLY MEASURES

Lush Green Landscaping - Rain Water Harvesting to recharge the Ground Water Table

Note: In the quest for excellence some of the specifications may have to be revised and are subject to change at the sole discretion of the Company / Architect.



# DELIVERED PROJECT

Chintels Paradiso, Sector- 109, Chintels Metropolis, Gurugram.  
1.18 Million Sq.ft (532 Apartments)



## CHINTELS PARADISO

*peaceful abode*

SECTOR 109, CHINTELS METROPOLIS,  
GURUGRAM



ACTUAL SITE IMAGES





# CHINTELS PARADISO

*peaceful abode*

SECTOR 109, CHINTELS METROPOLIS,  
GURUGRAM



**PARADISE CLUB**



**CHILDREN'S PLAYING AREA**



**SWIMMING POOL**



**SQUASH COURT**



**BADMINTON COURT**



**HUGE BALCONY**



# THE CHINTELS GROUP



Our flagship company, Chintels India Ltd. is in the process of developing over 600 acres of self-owned prime land in Delhi and NCR. All our projects are located strategically in areas where development is happening fast with international quality infrastructure.

Personal initiative, innovation and commitment to be the best are the driving force that have catapulted the Chintels Group to be amongst the top ten land owners and is emerging as one of the fastest growing developers in Delhi and NCR region.

We are very selective in choosing our associates for development of our projects. Each associate has several years of experience in their related fields and are chosen with due diligence based on our highly demanding quality standards which are in line with our overall mission and vision.

G R O U P   H O U S I N G   /   T O W N S H I P   /   R E T A I L   /   C O M M E R C I A L   /   I T   P A R K



## FUTURE PROJECTS

License no.250 of 2007 dated 02.11.2007 and License no.50 of 2012 dated 17.05.2012 granted by HARYANA GOVERNMENT TOWN AND COUNTRY PLANNING DEPARTMENT. License Holders : M/s Chintels India Limited and others. Building Plan Approval – No.D.T.C.P-Memo No. ZP-353/SD/(BS)/2013/47120 dated 26/7/2013. Residential Group Housing development Pocket B in 9.75 acres. Total Numbers of 523 units inclusive of EWS. Provision for community centre, shopping area within the project. The details of the approval may be checked at our office.

HRERA Regd. No. 125 of 217 dt 28/08/2017 for Tower 3, 4 & 5

HRERA Regd. No. RC/REP/HARERA/GGM/307/39/2019 dt. 24/01/2019 for Tower 1, 2, 6, 7, 8 & 9

The plans, specification, images and other details herein are only indicative and the Developer / Owner reserves its right to change any or all these at its discretion subject to grant of approval from relevant authorities. This printed material does not constitute an offer, an invitation to an offer and / or commitment of any nature between the Developer / Owner and the recipient. The Developer's / Owner's website(s) and other advertising and publicity material include Artist's impression indicating the anticipated appearance of completed development. No warranty is given that the completed will comply in any degree with such Artist's impressions. Costs, design and facilities and/or specification may be subject to change without notice.

The project land is mortgaged with ICICI Bank Ltd., and on request NOC would be issued by the ICICI Bank Ltd. as and when required.



 9818009977



  
Building the future. **NOW**

CHINTELS INDIA LIMITED: Corporate Office: Chintels Corporate Park, Near Chintels Chowk, Sector - 114,  
Gurugram - 122017, Haryana (INDIA)

Registered Office: Chintels House, A-11, Kailash Colony, New Delhi - 110048 (INDIA)

Phone: +91 - 124 - 7161000

Email: [info@chintels.com](mailto:info@chintels.com)

Website: [www.chintels.com](http://www.chintels.com)

Member of  
